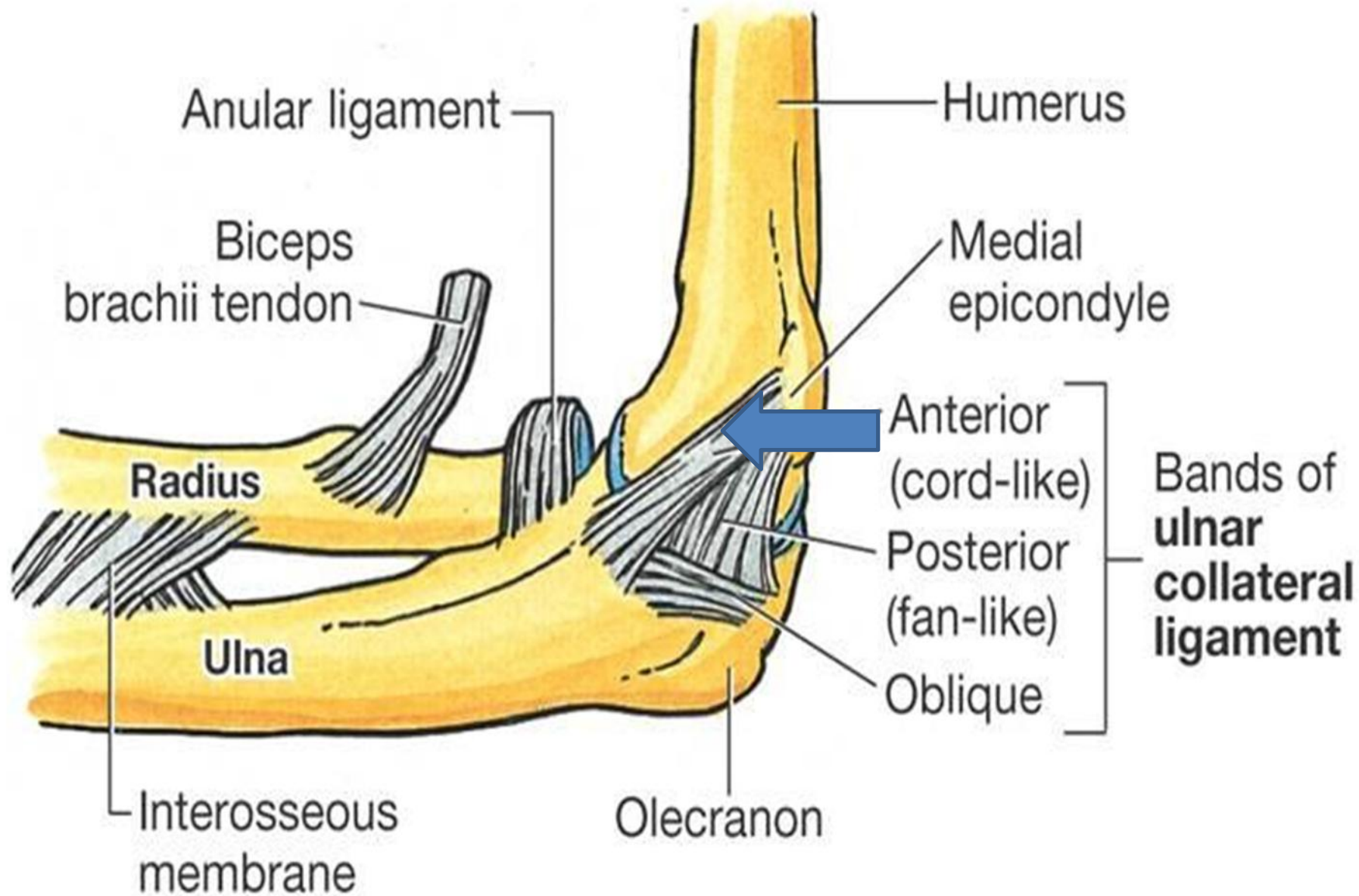


بسم الله الرحمن الرحيم

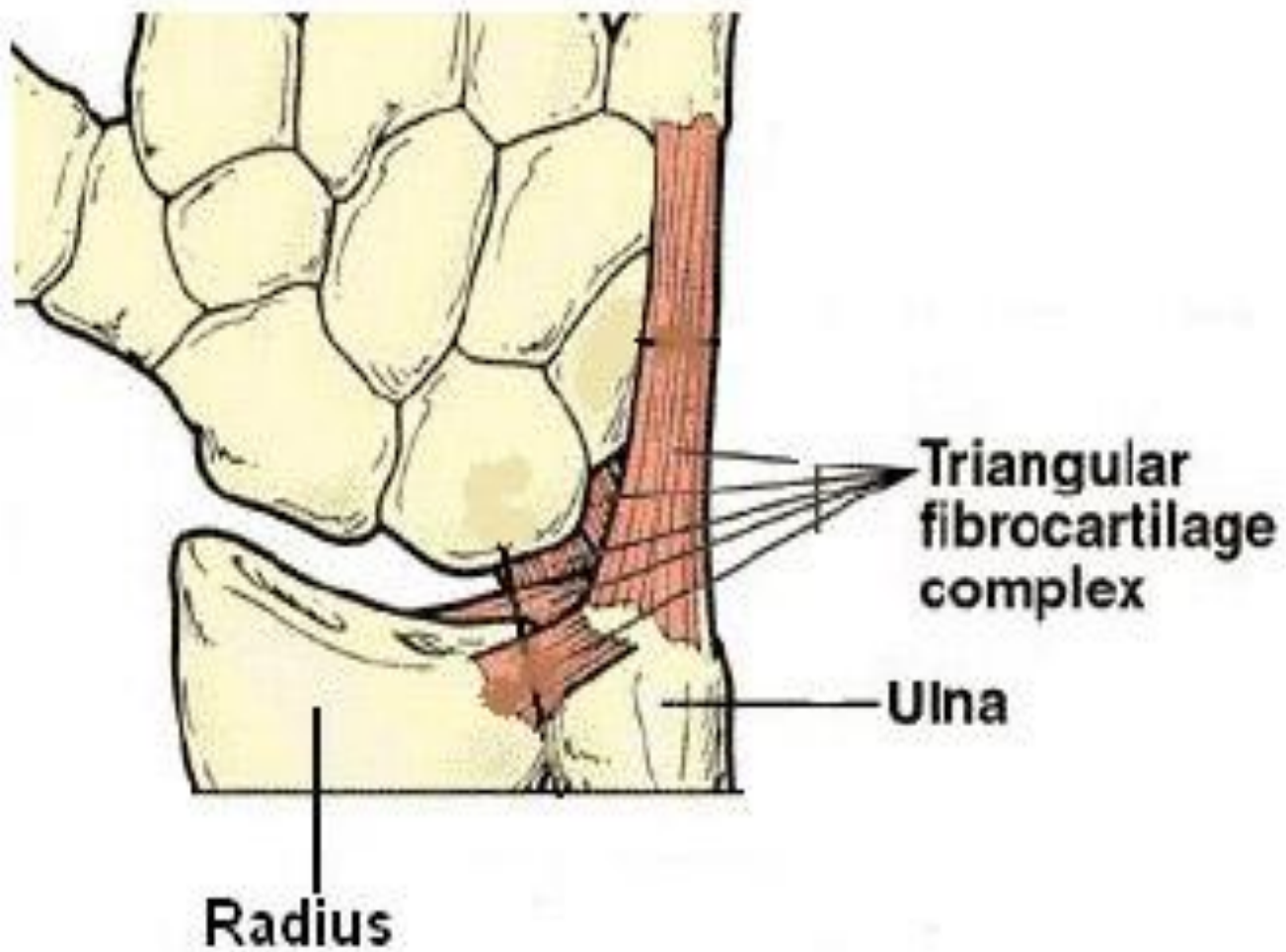
السلام عليكم ورحمة الله وبركاته

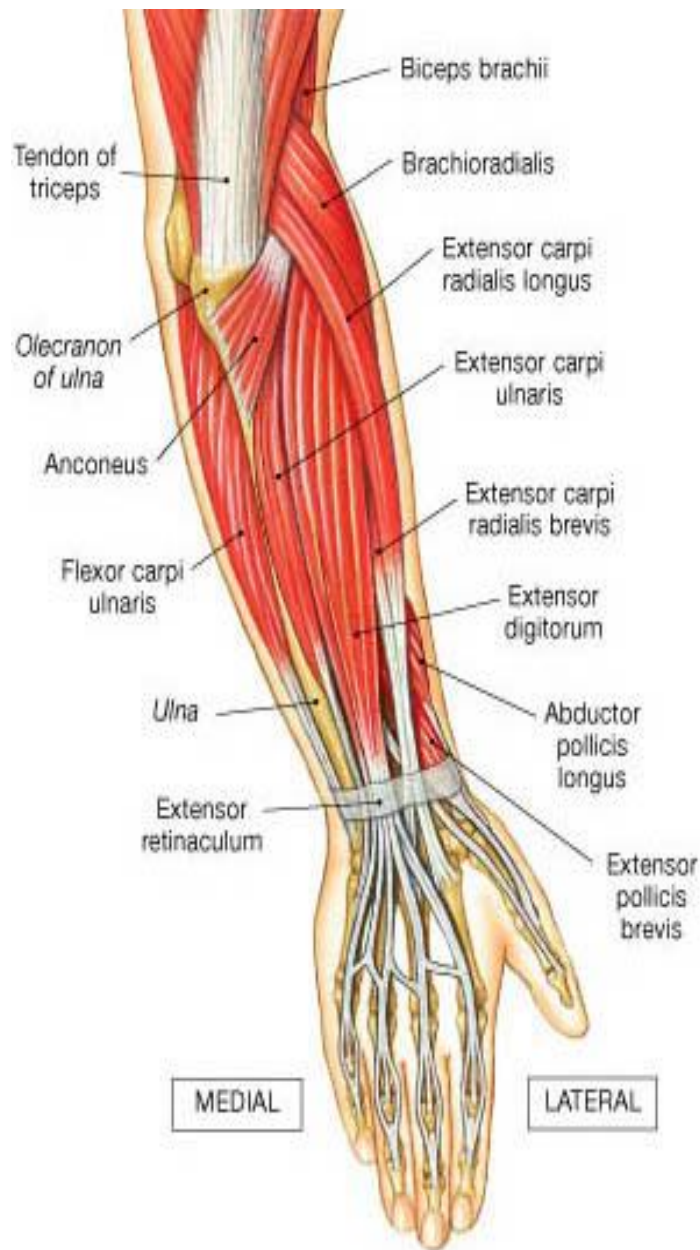
Human anatomy Lec.4

د. مثنى الطائي



C Medial view





(d) Posterior view, superficial

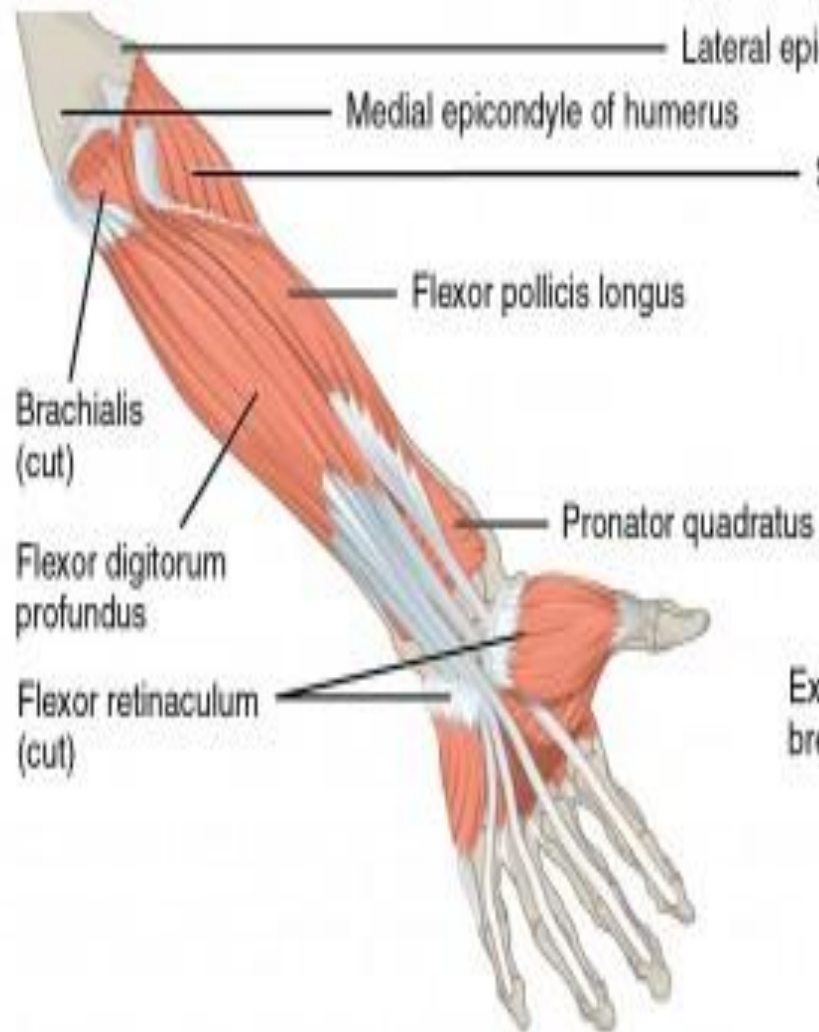


(e) Posterior view, middle



(f) Posterior view, deep

Left forearm superficial muscles (palmar view)

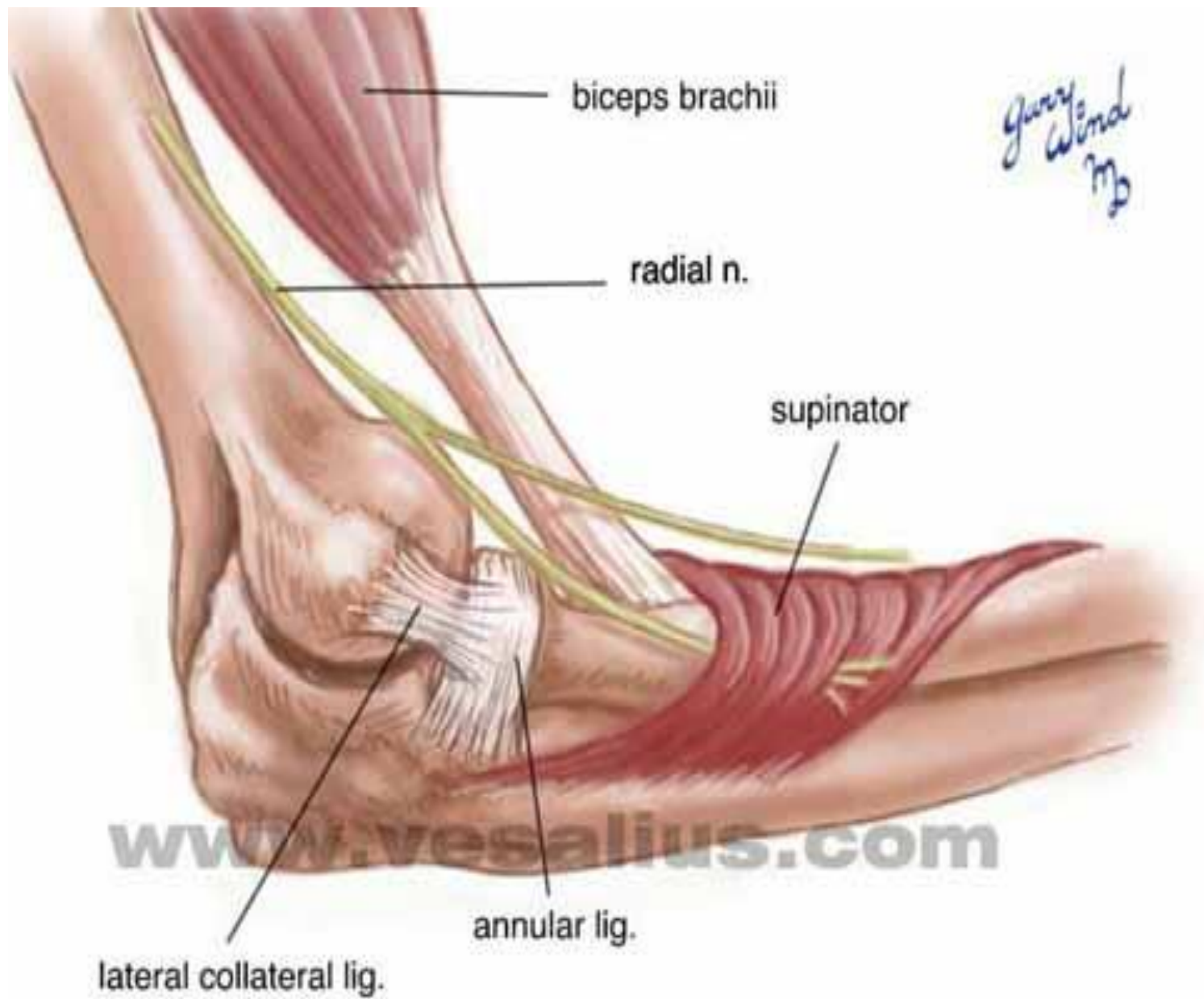


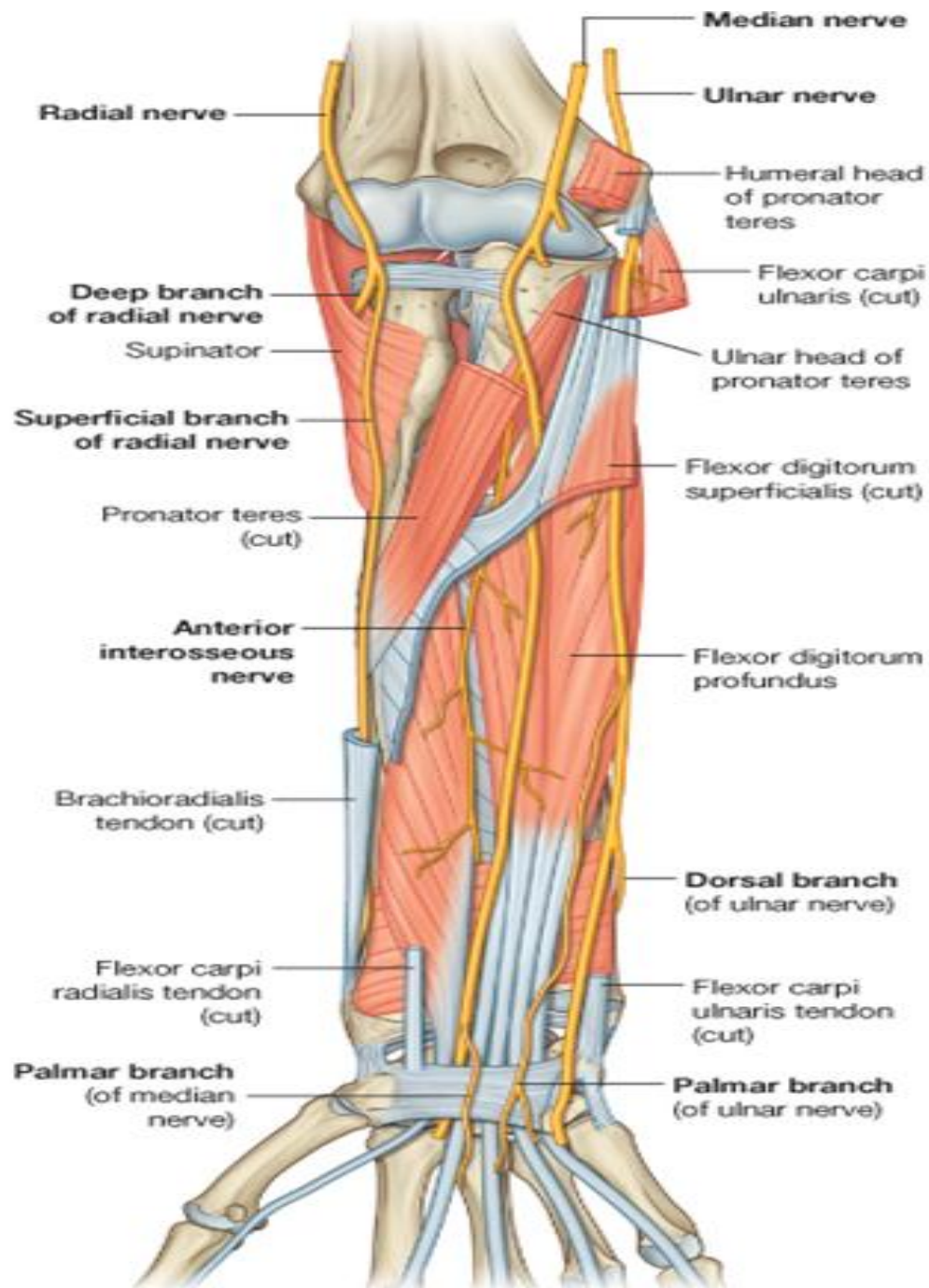
Left forearm deep muscles (palmar view)

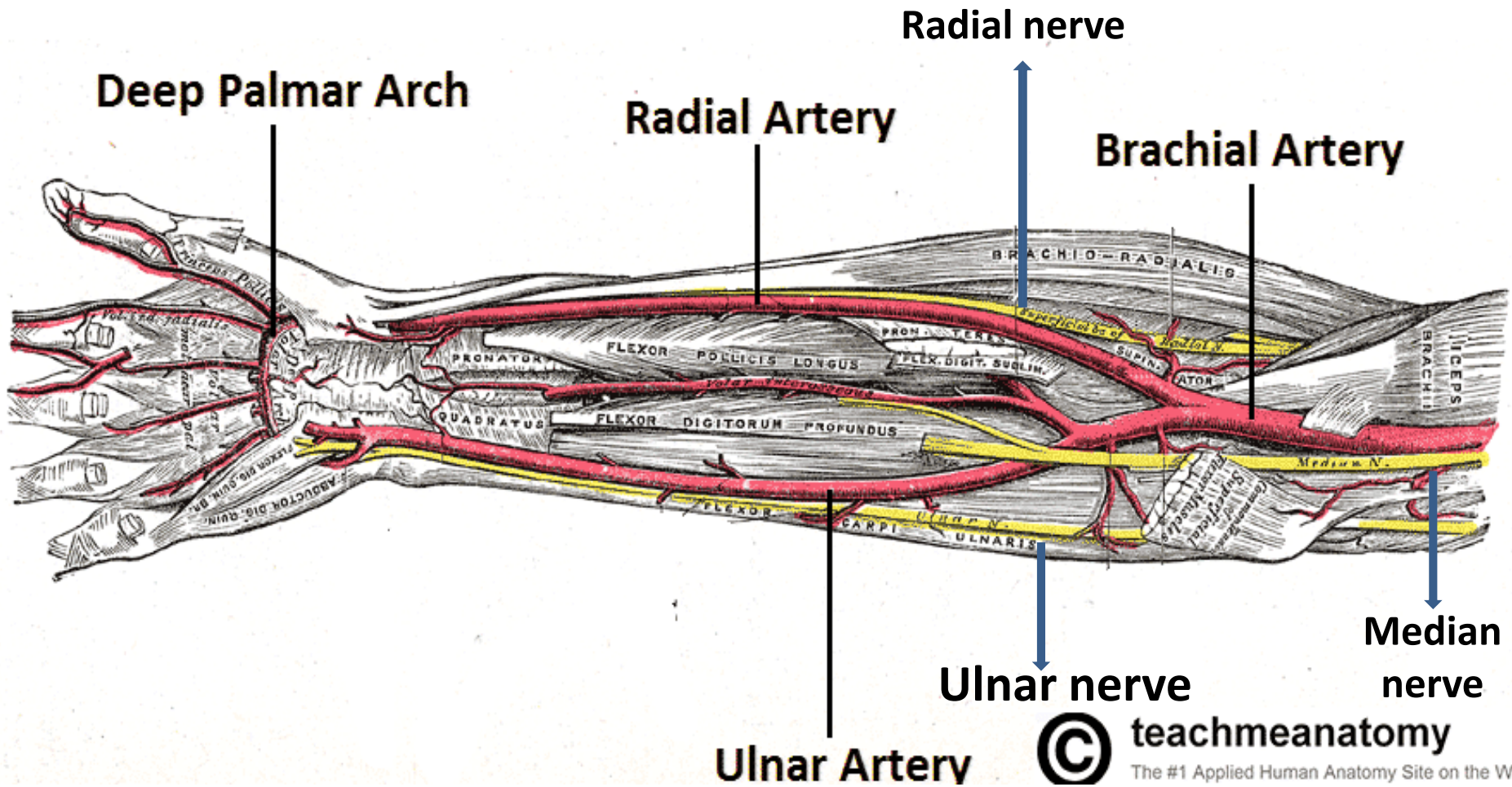
Left forearm superficial muscles (dorsal view)



Left forearm deep muscles (dorsal view)







**Ant.
Interosseous
nerve**



Pronator teres



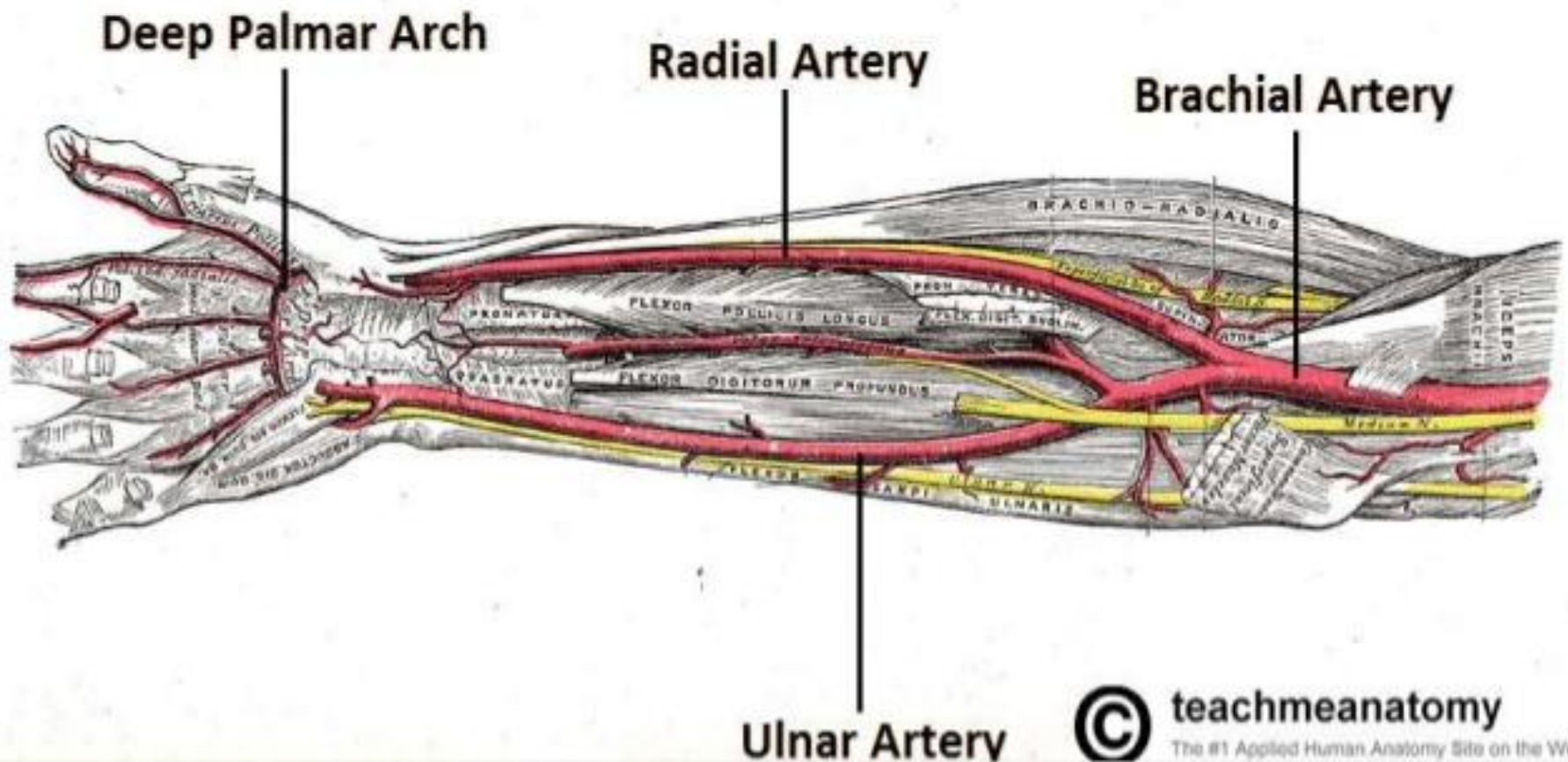
**Pronator
quadratus**

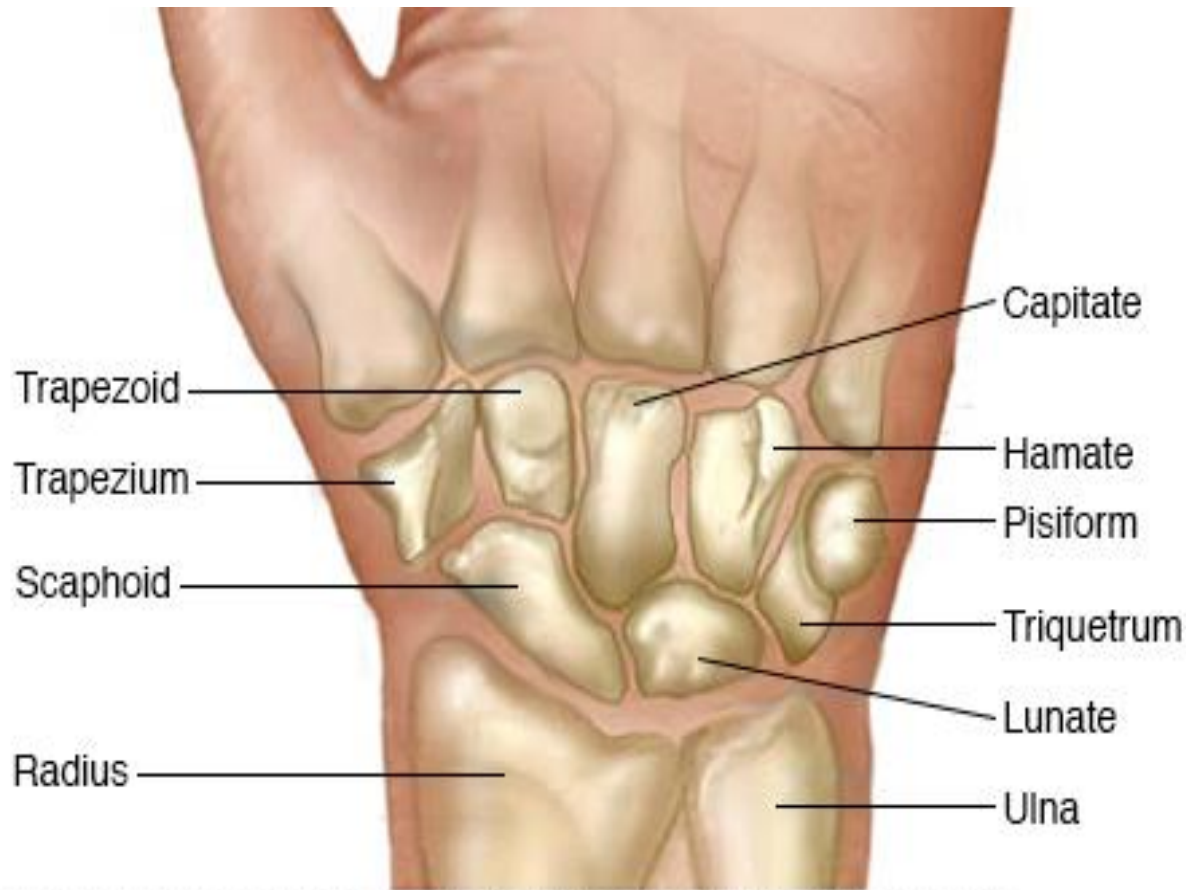


**Pronator teres is the main forearm pronator with the
elbow extended while pronator quadratus is the main
pronator with the elbow in flexion**

In the Forearm

In the distal region of the cubital fossa, the brachial artery bifurcates into the radial artery and the ulnar artery. The radial artery supplies the posterior aspect of the forearm and the ulnar artery supplies the anterior aspect. The two arteries anastomose in the hand, by forming two arches, the superficial palmar arch, and the deep palmar arch.





© MAYO FOUNDATION FOR MEDICAL EDUCATION AND RESEARCH. ALL RIGHTS RESERVED.

**8 wrist bones divided into 2 rows proximal
composed of “scaphoid,lunate,triquetrum
&pisiform”& distal composed of” trapezium
,trapezoid, capitate & hamate”**

pathology

The most commonly fractured wrist bone is the scaphoid while the lunate is most commonly associated with instability & dislocation

The trapezium is most commonly associated with degenerative changes in manual workers in the absence of acute injuries.

Wrist Joint Ligaments



Wrist Joint Ligaments supports wrist joint and maintains link between wrist joint bones

Functions of Wrist Joint Ligaments

- Support
- Wrist Ligaments Maintains Link Between Bones
- Function of Wrist Ligaments in Resisting Dislocation
- Wrist Ligaments Prevents Displacement of Tendons
- Nomenclature of Ligaments of the Wrist Joint

Clinically the most important wrist ligaments are the scapholunate ligament & the lunotriquetral ligament, these are most commonly injured & associated with wrist instability.

شكرا جزيلًا